

COMMERCIAL COLLECTION



RECESSED & SURFACE MOUNTED PAPER TOWEL DISPENSERS & WASTE BINS



10-0462-AD Recessed (Traditional)
304 S/Steel, Holds 475
Std Multi-fold, 7.6L Bin.
RWO 325x670x110mm

10-0462-AD-9 Surface Mounted



10-0467 Recessed (Traditional)
304 S/Steel, Holds 800
Std Multi-fold, 22.7L Bin.
RWO 290x1360x160mm

10-0467-9 Surface Mounted



10-0469 Recessed (Traditional)
304 S/Steel, Holds 800
Std Multi-fold, 46L Bin.
RWO 400x1390x102mm

10-0469-9 Surface Mounted



10-1001 Recessed (Traditional)
Counter Top, 304 S/Steel,
Holds C-fold Paper Towels,
28L Bin. Counter Top Opening
318x380mm



10-64623 Recessed (Simplicity)
304 S/Steel, Holds 475
Std Multi-fold, 8.4L Bin.
RWO 324x673x102mm

10-64623-9 Surface Mounted



10-6467 Recessed (Simplicity)
304 S/Steel, Holds 800
Std Multi-fold, 18.9L Bin.
RWO 290x1360x102mm

10-6467-9 Surface Mounted



10-64676 Recessed (Simplicity)
304 S/Steel, Holds 800
Std Multi-fold, 26.5L Bin.
RWO 290x1360x160mm

10-64676-9 Surface Mounted



10-6462 Recessed (Simplicity)
304 S/Steel, Holds 800
Std Multi-fold, 34L Bin.
RWO 400x1335x150mm

10-6462-9 Surface Mounted



10-94623 Recessed (Profile)
304 S/Steel, Holds 475
Std Multi-fold, 7.6L Bin.
RWO 324x673x108mm



10-9469 Recessed (Profile)
304 S/Steel, Holds 800
Std Multi-fold, 50.4L Bin.
RWO 400x1384x102mm



10-20469 Recessed (Roval)
304 S/Steel, Holds 800
Std Multi-fold, 56L Bin.
RWO 397x1381x102mm

10-20469-9 Surface Mounted



10-204623 Recessed (Roval)
304 S/Steel, Holds 475
Std Multi-fold, 11.2L Bin.
RWO 286x672x100mm

10-204623-9 Surface Mounted

*Majority available in semi-recessed and surface mount.

**RWO = Rough Wall Opening

Free Call 1800 023 441

www.asijdmacdonald.com.au

ASI JD MacDonald Pty Ltd - A Subsidiary of American Specialties Inc. 48 Smith Road, Springvale, Victoria 3171 Tel 03 8558 7200 Fax 03 9548 1141

ASI JD Macdonald reserves the right to, and does from time to time, make changes and improvements in design and dimensions. The photographs & line drawings of the products in this catalogue are representational only. All dimensions are in millimetres.

COMMERCIAL COLLECTION



PAPER TOWEL DISPENSERS



JDM-ROLL-DISP

Surface Mounted, Mild Steel, White Powder Coat, Holds Std Core Rolls up to 19mm Wide. Overall Size: 222x282x178mm



10-8165 Surface Mount (Traditional) Die Cast Aluminium, Holds Std Core Rolls up to 152mm diam, Satin Matte Finish. Overall Size: 330x45x102mm



10-1002 Counter Top (Traditional) 304 Satin S/Steel, Holds C-fold, Adjustable to suit bench thickness from 13-102mm. Opening: 362x152mm



10-0245-SS Surface Mount (Traditional) 304 S/Steel, Holds 400 Single Fold, Tumbler Lock, Satin Finish. Overall Size: 285x285x142mm



10-0215 Surface Mount (Traditional) 304 S/Steel, Holds 275 Std Multi-fold or 200 C-fold, Tumbler Lock, Satin Finish. Overall Size: 280x205x102mm



10-0210 Surface Mount (Traditional) 304 S/Steel, Holds 525 Std Multi-fold or 400 C-fold, Tumbler Lock, Satin Finish. Overall Size: 280x370x102mm



10-20210 Surface Mount (Roval) 304 S/Steel, Holds 525 Std Multi-fold or 400 C-fold, Tumbler Lock. Satin Finish. Overall Size: 281x345x124



10-0452 Recessed (Traditional) 304 Satin S/S, 800 Std M-fold or 600 C-fold, Tumbler Lock. RWO 325x670x110mm
10-0452-9 Surface Mounted



10-6457 Recessed (Simplicity) 304 S/Steel, 475 Std Multi-fold or 350 C-fold, Tumbler Lock, Satin Finish. RWO 290x400x110mm



10-20452 Recessed (Roval) 304 S/Steel, Holds 800 Std Multi-fold or 600 C-fold, Tumbler Lock. Satin Finish. RWO 286x672x100

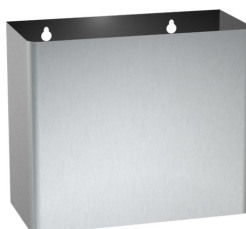
WASTE BINS



10-0825 Surface Mount (Traditional) 304 S/Steel, 75.7L Overall Size: 400x555x300mm
10-0826 - Same Except 45.4L Overall Size: 390x585x200



10-0828 Surface Mount (Traditional) 304 S/Steel, 25.4L Overall Size: 355x430x165mm



10-0827 Surface Mount (Traditional) 304 S/Steel, 7.6L Overall Size: 275x230x110mm



10-20826 Surface Mount (Roval) 304 S/Steel, 42L Overall Size: 384x584x216mm



10-0458 Semi-Recessed (Traditional) 304 S/Steel, 46L. RWO 400x740mm
10-0458-9 Surface Mounted

*RWO = Rough Wall Opening

Free Call 1800 023 441

www.asijdmacdonald.com.au

ASI JD MacDonald Pty Ltd - A Subsidiary of American Specialties Inc. 48 Smith Road, Springvale, Victoria 3171 Tel 03 8558 7200 Fax 03 9548 1141

ASI JD Macdonald reserves the right to, and does from time to time, make changes and improvements in design and dimensions. The photographs & line drawings of the products in this catalogue are representational only. All dimensions are in millimetres.

COMMERCIAL COLLECTION



WASTE BINS (CONTINUED)



10-20458 Semi Recessed (Roval)
304 S/Steel, 42.6L
Overall Size: 400x660x100mm



10-9474 Recessed (Profile) 304 S/Steel, No Visible Welding or Open Seams, 53L
Overall Size: 400x980x160mm



10-0811 Free Standing (Traditional) 304 S/Steel, 54L
Overall Size: 330x560x311mm
10-0813 - Same Except 72L
Overall Size: 330x760x311



10-0810 Free Standing (Traditional) 304 S/Steel, 54L
Overall Size: 330x775x311mm
10-0812 - Same Except 72L
Overall Size: 330x980x311



10-1003 Counter Top Mount 304 S/Steel, Receives Waste into Loose Waste Bin, 28L.
Counter Top Opening: 320x220mm



10-1003-MV Vertical Mount 304 S/Steel, Receives Waste into Loose Waste Bin, 28L.
Counter Top Opening: 320x220mm



10-0852 Surface Mount (Traditional) Sanitary Napkin Disposal, 304 S/Steel, Sloping Cover, 4.5L.
Overall Size: 190x246x102mm



10-20852 Surface Mount (Roval) Sanitary Waste Bin, 304 S/Steel, 3.8L
RWO 185x253x89mm



10-9471 Recessed (Profile) Sanitary Napkin Disposal, 304 S/Steel, Self Closing Push Door, 7.2L
Overall Size: 232x460x108mm



10-20470 Recessed (Roval) Sanitary Napkin Disposal, 304 S/Steel, 3.7L
RWO 289x244x102mm
10-20472 - Same Except Expandable. Mounts Through Partitions Up To 32mm.

SOAP DISPENSERS



10-0350 Surface Mount Chrome Plated Brass Body, S/Steel & Plastic Internal Parts, 0.5L
Overall Size: 86x165x130mm



10-0351 Surface Mount S/Steel Housing, Mirror Finish, Concealed Mounting, 0.4L
Overall Size: 80x150x160mm



10-0340 Surface Mount Smoked Grey Tank & Opaque Greg Base, 1.36L
Overall Size: 127x208x98mm



10-0345 Surface Mount 304 S/Steel, 1.2L
Overall Size: 205x120x100mm



10-0347 Surface Mount 304 S/Steel, 1.2L
Overall Size: 100x205x135mm

*RWO = Rough Wall Opening

Free Call 1800 023 441

www.asijdmacdonald.com.au

ASI JD MacDonald Pty Ltd - A Subsidiary of American Specialties Inc. 48 Smith Road, Springvale, Victoria 3171 Tel 03 8558 7200 Fax 03 9548 1141

ASI JD Macdonald reserves the right to, and does from time to time, make changes and improvements in design and dimensions. The photographs & line drawings of the products in this catalogue are representational only. All dimensions are in millimetres.

COMMERCIAL COLLECTION



SOAP DISPENSERS (CONTINUED)



10-9343 Surface Mount
304 S/Steel, 1.4L
Overall Size: 185x165x94mm



10-0346 Surface Mount
304 S/Steel, 1.18L, Ver-
tically Mounted Valve
For Use in Showers.
Overall Size: 122x208x78mm



10-5001-SS Surface Mount
304 S/Steel, 0.9L
Overall Size: 110x280x100mm



10-0361 Surface Mount
High Impact Plastic, Bat-
tery Operated, Automatic,
Adjustable Settings, 0.8L.
Overall Size: 118x263x113mm



10-0360 Surface Mount
304 S/Steel & ABS, Automatic,
6x AAA Alkaline Batteries, 1L.
Overall Size: 124x235x115mm



10-20364 Surface Mount
(Roval) 304 S/Steel, Automatic,
6x AAA Alkaline Batteries, 1L.
Overall Size: 140x276x102mm



10-0332 Bench Mount
Corrosion Resistant Valve, Ad-
justable Threaded Shank (allows
counter installation up to 90mm
thick through 22mm diameter
hole). Various Sizes Available.



10-20333 Bench Mount (Roval)
304 S/Steel, Sensor Operat-
ed, Polished Finish on Exposed
Surfaces. Sits 86mm
Above Bench, 1.6L.
Overall Size: 102x546x150mm



10-0326 Recessed
304 S/Steel, 1.5L
RWO 230x125x110mm



10-0327 Recessed
304 S/Steel, 1L
RWO 150x150x100mm



10-9326 Recessed
304 S/Steel, 1.5L
RWO 230x125x110mm



10-V-321
Liquid Soap Valve, ABS Plastic
& S/Steel. Suits Models; 0318,
0318A, 0345, 0347 & 9343



10-V-320
Liquid Soap Valve, Polished
Chrome Plated Brass & S/Steel
Push Button. Suits Models;
0326, 0327, 6326 & 9326

Free Call 1800 023 441

www.asijdmacdonald.com.au

ASI JD MacDonald Pty Ltd - A Subsidiary of American Specialties Inc. 48 Smith Road, Springvale, Victoria 3171 Tel 03 8558 7200 Fax 03 9548 1141

ASI JD Macdonald reserves the right to, and does from time to time, make changes and improvements in design and dimensions. The photographs & line drawings of the products in this catalogue are representational only. All dimensions are in millimetres.

COMMERCIAL COLLECTION



TOILET ROLL HOLDERS



10-0710 Single
304 S/Steel, Controlled Delivery,
High Polish Finish.
Overall Size: 152x70x105mm



10-0263-1 Single
HD Cast Aluminium, Controlled
Delivery, Satin Matte Finish.
Overall Size: 159x45x121mm
10-0263-12 - With Vandal Resist
Spindle.
10-0263-1A - W/Out Controlled
Delivery



10-7305-B Single
304 S/Steel, Chrome Plated
Roller, Bright Finish.
Overall Size: 207x51x98mm
10-7305-S - Satin Finish



10-7402 Single
304 S/Steel, Available as
Surface Mount or Recessed
and Satin or Bright Finish.
Overall Size: 160x160mm



10-0042 Single Jumbo
304 S/Steel, Holds 229mm
Roll, Viewing Slot.
Overall Size: 270x270x115mm



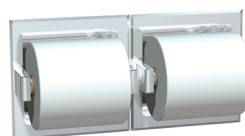
10-0715 Double
304 S/Steel, Controlled Delivery,
High Polish Finish.
Overall Size: 283x70x105mm
10-0710 - Single
152x70x105mm



10-0264-1 Double
HD Cast Aluminium, Controlled
Delivery, Satin Matte Finish.
Overall Size: 324x45x121mm
10-0264-12 w Vandal Resist
Spindle. **10-0264-1A** W/O Cont.
Deliv. **10-0264-1A2** W/O Cont.
Deliv & w Vandal Resist Spindle



10-7305-2B Double
304 S/Steel, Chrome Plated
Roller, Bright Finish.
Overall Size: 343x51x98mm
10-7305-S - Satin Finish



10-7402 Double
304 S/Steel, Available as Surface
Mount, Recessed, With or With-
out Hood, Satin or Bright Finish.
Overall Size: 320x160mm



10-0697-GAL Double
304 S/Steel, Shelf.
Overall Size: 460x106x127



10-0040 Double Jumbo
304 S/Steel, Holds Two 229mm
Rolls, Slide Panel To Expose
Other Roll, Viewing Slots.
Overall Size: 530x290x160mm



10-0030 Double
304 S/Steel, Top Roll
Automatically Drops When
Bottom Roll Is Emptied.
Overall Size: 152x305x165mm



10-9030 Double (Profile)
304 S/Steel, Top Roll
Automatically Drops When
Bottom Roll Is Emptied.
Overall Size: 152x305x159mm



10-20030 Double S/Mount
(Roval) 304 S/Steel, Top Roll
Automatically Drops When
Bottom Roll Is Emptied.
Overall Size: 154x308x165mm



10-20031 Double Recessed
(Roval) 304 S/Steel, Top Roll
Automatically Drops When
Bottom Roll Is Emptied.
Overall Size: 205x356x165mm

Free Call 1800 023 441

www.asijdmacdonald.com.au

ASI JD MacDonald Pty Ltd - A Subsidiary of American Specialties Inc. 48 Smith Road, Springvale, Victoria 3171 Tel 03 8558 7200 Fax 03 9548 1141

ASI JD Macdonald reserves the right to, and does from time to time, make changes and improvements in design and dimensions. The photographs & line drawings of the products in this catalogue are representational only. All dimensions are in millimetres.

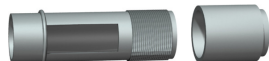
COMMERCIAL COLLECTION



TOILET ROLL HOLDERS (CONTINUED)



10-0029 Triple
304 S/Steel, Holds
Three Standard Rolls.
Overall Size: 120x425x125mm



10-R-009
Theft Resistant Spindle, High
Impact ABS Plastic. Available
For The 7000 Series of Toilet Roll
Holders.



10-0266 Surface Mounted
Vandal Proof Hood, 304 S/Steel,
Suits 0263-1 Series (Single).
Overall Size: 184x197x175
10-0267 - Suits 0264-1 Series
(Double) 359x197x175mm

HOOKS & SOAP DISH



10-0714
Coat Hook & Bumper, Chrome
Plated Brass, Projects 74mm
From Wall.



10-0751
Single Heavy Duty Robe Hook,
Brass With Satin Chrome Finish,
Concealed Mounting, Projects
80mm From Wall.



10-7340-B
Single Robe Hook, 304 S/Steel,
Bright Finish, Projects 40mm
From Wall.
10-7340-S - Satin Finish



10-7301-B
Single Towel Pin, 304 S/Steel,
Bright Finish, Projects 90mm
From Wall.
10-7301-S - Satin Finish



10-7345-B
Double Robe Hook, 304
S/Steel, Bright Finish, 100mm
Bar, Projects 90mm From Wall.
10-7345-S - Satin Finish



10-7382-B
Hat & Coat Hook, 304 S/Steel,
Bright Finish, 135x75mm.
10-7382-S - Satin Finish



10-8425
Single Clothes Hook, 304
S/Steel, Satin Finish, Projects
32mm From Wall, 55mm High.



10-8215-3
Mop & Broom Holder Rack, 304
S/Steel, 3 Holders, 660x90mm.
10-8215-4 - 4 Holders, 915mm
10-8215-5 - 5 Holders, 1170mm



10-1307-3
Utility Hook Strip, 304 S/Steel, 3
Hooks, 660x100x13mm.
10-1307-4 - 4 Hooks, 915mm
10-1307-5 - 5 Hooks, 1170mm
10-1307-6 - 6 Hooks, 1420mm



10-7320-B
Soap Dish with Drain Holes,
304 S/Steel, Bright Finish.
Overall Size: 110x50x100mm.
10-7320-S - Satin Finish

Free Call 1800 023 441

www.asijdmacdonald.com.au

ASI JD MacDonald Pty Ltd - A Subsidiary of American Specialties Inc. 48 Smith Road, Springvale, Victoria 3171 Tel 03 8558 7200 Fax 03 9548 1141

ASI JD Macdonald reserves the right to, and does from time to time, make changes and improvements in design and dimensions. The photographs & line drawings of the products in this catalogue are representational only. All dimensions are in millimetres.

COMMERCIAL COLLECTION



MISCELLANEOUS



10-7355

Round Towel Bar, 304 S/Steel, Projects 80mm From Wall, 19mm Diameter. Available in Bright or Satin Finish, 460, 640 & 760mm Lengths.

10-0712

Retractable Clothes Line, 304 S/Steel, Spring Actuated 1830mm Vinyl Cord, Locking Nut To Hold Stretched Line Taught. Installs Over Bathtub or in Shower.

10-0258-SS

Surface Mounted Facial Tissue Dispenser, 304 S/Steel, Holds 300 Single or 150 Two-Ply Sheets. Overall Size: 260x125x55mm

10-20477-SM (Roval)

Surface Mounted Seat Cover Dispenser, 304 S/Steel, Holds 250 Single or Half Fold Paper Covers, Satin Finish. Overall Size: 400x191x60mm

SHELVES



10-0692 Surface Mounted Shelf (Flat Top Series), 304 S/Steel. Available Sizes: 125, 150 or 200mm Depth, Ranging From 305 to 760mm Long.



10-0694-18 Surface Mounted Shelf With Splashback, 304 S/Steel, 127mm Depth, 460mm Long.
10-0694-24 - 610mm Long.



10-7380-18 Surface Mounted Towel Shelf, 304 S/Steel, Projects 155mm From Wall, 460mm Long. Bright or Satin Finish.
10-7380-24 - 610mm Long.

MIRRORS



10-0600V

Angle Framed Mirror, 304 S/Steel, Satin Finish.



10-0605V

Angle Framed Mirror with Shelf, 304 S/Steel, Satin Finish.



10-0620V

Channel Framed Mirror, 304 S/Steel.



10-0625V

Channel Framed Mirror with Shelf, 304 S/Steel.



10-8026

Frameless Stainless Steel Mirror, 304 S/Steel Polished at #8 Mirror Finish.



10-20650

Angle Framed Mirror (Roval) 304 S/Steel, Tempered Glass.

*Please refer to ASI JD MacDonald specification sheets on the website to view sizes available. NOTE: some sizes may require longer lead times than others.

Free Call 1800 023 441

www.asijdmacdonald.com.au

ASI JD MacDonald Pty Ltd - A Subsidiary of American Specialties Inc. 48 Smith Road, Springvale, Victoria 3171 Tel 03 8558 7200 Fax 03 9548 1141

ASI JD Macdonald reserves the right to, and does from time to time, make changes and improvements in design and dimensions. The photographs & line drawings of the products in this catalogue are representational only. All dimensions are in millimetres.