

# Lockwood Home Security Solutions



We take the worry out of  
protecting what's valuable to you.  
**Lockwood:** *no worries®*



**ASSA ABLOY**

**25YEAR**

**MECHANICAL  
WARRANTY**

[www.lockweb.com.au](http://www.lockweb.com.au)



**We take the worry out of  
protecting what's valuable to you.**  
**Lockwood:** *no worries*<sup>®</sup>



**KEYLESS ENTRY**

Page 4



**HINGED DOOR LOCKS**

Page 10



**ENTRANCE HANDLES**

Page 16



**DOOR HANDLES**

Page 18



**SLIDING DOOR LOCKS**

Page 22



**SECURITY / SCREEN  
DOOR HARDWARE**

Page 25



**120N PADLOCKS**

Page 26



# Keyless Digital Deadlatch

- Unlock with pin or key card
- Program multiple user codes



The 001Touch™ Digital Deadlatch combines a stylish digital touch screen keypad with the security of the iconic Lockwood 001® Deadlatch. The simple convenience of using a pin code means you never have to carry keys again!

## Illuminated touchscreen keypad

The elegant touch screen keypad is easy to use and comprehend with the same versatility as today's devices.

## Pin code or key card

Choose the convenience of a pin code or key card. One master pin code will manage up to twenty user pin codes. Up to twenty key cards can also be programmed.

## Cryptic code function

Prevent others from identifying your pin code during access. The cryptic code function confuses the onlooker but at the same time allows you to gain entry.

## User code that expires

A temporary pin access code can be programmed to last from three hours to two weeks. This is ideal for allowing short-term access to your property and reduces the potential risks in giving your keys to a tradesman, cleaner or neighbour.

## Visual guide for programming

For added convenience, an illuminated guide will assist in the programming of your 001Touch™ Digital Deadlatch.

## Low power consumption

Four standard AA batteries will unlock a door up to 10,000 times. A warning light will appear when the battery level reaches less than 30%.

## Battery check function

The battery level can be checked without removing the batteries.

## Emergency battery connection

In the event the battery goes flat, two battery contact points will fit a standard 9V battery, providing a temporary charge. This will allow entry with the pin or key card.

## Smart memory

The settings, codes and key cards will remain programmed in the lock should the batteries go flat.

## Product usage

The 001Touch™ Digital Deadlatch is best suited for residential and light commercial properties.

## Keyless Digital Deadlatch

Backset	60mm
Latch	Stainless Steel 18mm projection
Door Thickness	32mm to 50mm
Finish	Chrome Plate



**Safety Release®**  
Minimises the risk of being locked in.



**Emergency 9V Battery Connection**  
In the event your batteries are depleted.



**Lock Alert®**  
Indicator shows lock status at a glance.



**2 Keys Included**  
Can be keyed alike to other Lockwood door locks.



**Digital Touch Screen**  
Illuminated keypad.



**Batteries Included.**



**Proximity Card**  
2 key cards included.



**Retrofittable**  
Replace your existing 001® Deadlatch.



**Deadlatch Bolt**  
Stainless steel 18mm projection.



Inside



Outside

# Keyless Digital Deadbolt

- Touch screen pin code access (key override)
- Program multiple user codes



No Keys? No Worries. The Lockwood Digital Deadbolt lets you unlock your front door by entering a simple code.

Ideal for use on new doors or as a replacement on an existing door lock on your home, the Keyless Digital Deadbolt is also suitable for internal and light commercial doors such as storerooms and shop fronts.

## Illuminated touch screen keypad

The elegant touch screen keypad is easy to use and comprehend with the same versatility as today's devices.

## Visual guide for programming

For added convenience, an illuminated guide will assist in the programming of your Digital Deadbolt.

## Low power consumption

Four AA alkaline batteries will unlock a door for approximately 12 months if used 10 times per day. A battery icon will begin flashing when the battery level reaches less than 30%.

## Emergency key override

In the event your battery goes flat there is a key override function that will prevent you from being locked out.

## User code that expires

A temporary pin access code can be programmed to last from three hours to two weeks. This is ideal for allowing short-term access to your property and reduces the potential risks in giving your keys to a tradesman, cleaner or neighbour.

## Code lockout settings

Privacy mode allows you to deactivate the external keypad from the inside providing a secure environment from others who may have pin code access. By using your master pin, you can also restrict all user pin access.

## Product usage

The Lockwood Digital Deadbolt can be used on residential and light commercial properties.

## Keyless Digital Deadbolt

<b>Backset</b>	Adjustable 60mm or 70mm
<b>Bolt</b>	Zinc alloy 25mm projection
<b>Internal thin doors</b>	Plastic gasket (32mm-36mm)
<b>External thick doors</b>	Rubber weather resistant gasket (37mm - 50mm)
<b>Finish</b>	Powder Coated Silver



**Digital Touch Screen**  
Illuminated keypad.



**Emergency Key Override**  
2 Keys included.



**Batteries**  
Included.



**Tapered Bolt**  
For ease of alignment to strike.



**Kinetic Defence®**  
Bump and pick resistant.



Inside



Outside

# Wireless Digital Deadbolt

- Wireless network connectivity
- Program multiple user codes



The Lockwood Electronic Wireless Digital Deadbolt offers the flexibility of a keyless entry locking solution whilst providing wireless Z-Wave or ZigBee network connectivity to integrate into building automation solutions. It features a master pin code that controls up to 250 user codes, voice guided programming, weather resistant keypad, low battery warning, key override for emergencies and many more features for your safety and convenience.

Ideal for use on new doors or as a replacement on an existing door lock on your home, the Wireless Digital Deadbolt is also suitable for internal and light commercial doors such as storerooms and shop fronts.

## Safety - Never carry keys

Keyless PIN code access ensures security whilst away and allows people entrusted with a PIN code to gain entry with the simple push of a button.

## Security - Resting easy all night long

Privacy mode provides ease of mind by disabling the keypad to ensure that no one can enter the property from outside while you are sleeping, with the exception of close family entrusted with a key.

## Remote Management - Remote access control

The Wireless Digital Deadbolt lock status can be viewed and controlled via a PC, Notebook, Tablet or Smartphone. Simply lock or unlock your door from anywhere in the world.

Receive a text message or email alert when the door is accessed to know that your loved ones have arrived home safely (when integrated with Remote Management Software).

## Convenience - Trigger other devices

Integration with Remote Management Software will enable you to turn on other devices when you open the door using your unique PIN code including:

- Unlock all doors
- Turn on the interior house lights
- Turn on the TV
- Adjusts the thermostat to 21°C
- Close the curtains

## Wireless Digital Deadbolt

<b>Backset</b>	Adjustable 60mm or 70mm
<b>Bolt</b>	Zinc alloy 25mm projection
<b>Internal thin doors</b>	Plastic gasket (32mm-36mm)
<b>External thick doors</b>	Rubber weather resistant gasket (37mm - 50mm)
<b>Finish</b>	Powder Coated Silver



**Digital Touch Screen**  
Illuminated keypad.



**Emergency Key Override**  
2 Keys included.



**Batteries**  
Included.



**Tapered Bolt**  
For ease of alignment to strike.



**Kinetic Defence®**  
Bump and pick resistant.



**Wireless Network**  
Optional Z-Wave or ZigBee wireless network modules can integrate this product with building automation systems. Wireless network modules sold separately.



Inside



Outside

# Code Handle Keyless Lockset

- Lever handle with integrated code lock
- Program multiple user codes



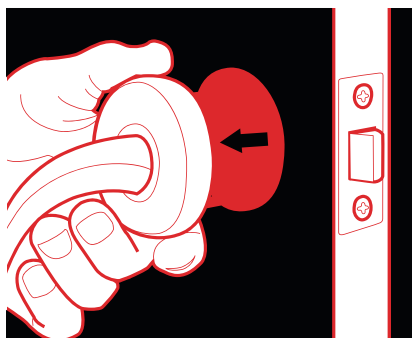
Lockwood's innovative door handle with integrated electronic security, offers simple and effective keyless locking, without compromising aesthetics.

Designed to enable conveniently controlled access to a door with easy installation. The Code Handle Keyless Lockset is ideal for offices, store rooms or a study at home.

The Code Handle provides flexible locking options for doors that need to be always locked or alternatively can be left open to provide free access during the day and locked at night. The Code Handle is an electronic product that is not weather rated, so use should be limited to appropriate environments. The Code Handle is not suitable for front doors and external doors.

## Retrofitable

Fits majority of doors with a 54mm hole. Designed to provide convenient keyless access to a door by replacing the existing door handle.



## Key features

- Lever handle with integrated code lock
- Program up to 9 user codes, 4-6 digits in length
- Supplied with Lockwood 530 60mm latch
- Easy to install
- Ideal for retrofit installations
- Programmable administration code for setting lock operation and user programming
- Manual or automatic locking
- Passage mode
- Code lockout for 3 minutes after 5 incorrect attempts
- Durable stainless steel handles
- Left and right handed versions

## Code Handle Keyless Lockset

Installation	25mm latch hole and 54mm lock hole
Backset	60mm (70mm and 127mm latches available)
Latch	Brass 13mm projection deadlatch
Door Thickness	32 to 55mm
Finish	Satin Pearl with Stainless Steel

## Description Part Number

Left Hand Code Handle	8816LSS
Right Hand Code Handle	8816RSS



**Door Thickness**  
32-55mm.



**Batteries Included**  
Approximately 30,000 operations before replacement.

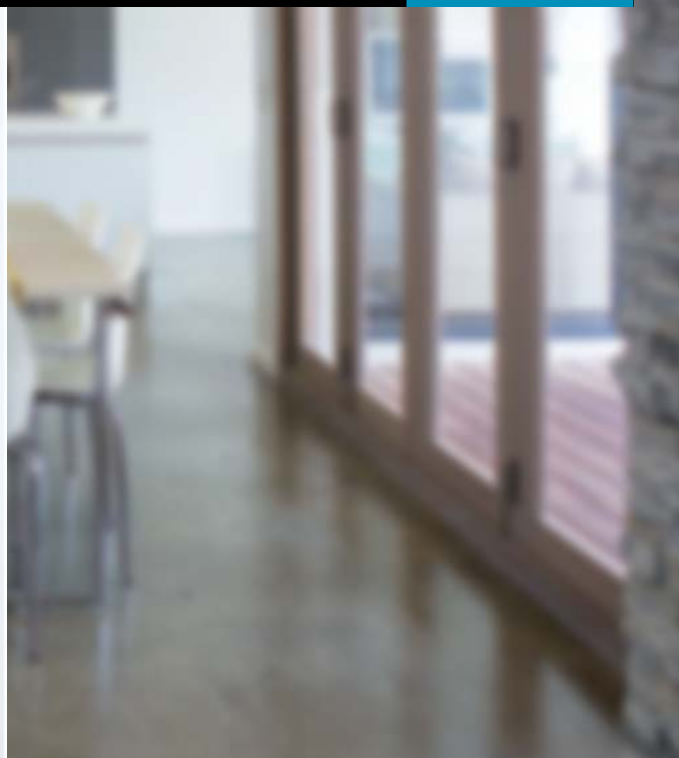


**Quick Installation**  
Fitting instructions included



# Mechanical Digital Locksets

- No electrical wiring required
- Resettable combination



The Lockwood Digital DX Locksets provide a mechanical method of keyless entry and are designed to control access into commercial areas, especially when frequent combination changes are needed to maintain security.

As the digital lockset utilizes mechanical operation, electrical wiring is not required.

For extra security when under forced attack, the inbuilt clutching mechanism allows the outside knob to rotate without operating or damaging the lock.

The factory set 5 digit code is easily changed to any 4, 5 or 6 digit code using the code changing kit provided with each lock.

## Outside function

Press the C button, enter the correct code, then turn the knob to unlock the door. Upon releasing the turn knob the code is automatically cancelled.

## Inside function

Opened by knob/lever at all times.

### 002DX Keyless Deadlatch

<b>Door Thickness</b>	32mm to 45mm.
<b>Latch</b>	18mm projection, stainless steel
<b>Backset</b>	60mm
<b>Internal Case Assembly</b>	High purity zinc alloy, 92mm wide, 72mm high, 54mm projection
<b>Finish</b>	Satin Chrome Brushed*

\* Finish denotes the finish on the digital code pad, the 002 lock body is supplied in Satin Chrome Pearl.



002 Digital DX Locks suit right or left hand doors opening inwards.

## Hold-back function

002 Digital DX Locks have a bolt hold-back function activated by rotating inside knob/lever clockwise, past 90 degrees.

### 530DX Keyless Entrance Set

<b>Door Thickness</b>	32mm to 45mm.
<b>Latch</b>	13mm projection deadlatch, Brass
<b>Backset</b>	60mm standard. 70mm and 127mm latches available separately on application
<b>Finish</b>	Satin Chrome Brushed,
<b>Options</b>	Also available in double keypad version, which provides a keypad on each side of the door.



530 Digital DX Locks suit right or left hand doors opening inward and outward.

The Lockwood 530 Digital DX Entrance set has been successfully tested up to 2 hours on fire door assemblies (depending on type of doorset) in accordance with Australian Standard AS1905.1:2005, Fire Resistant Doorsets.



# Keyless Entry Lockset

- Unique LockAlert® indicator shows lock status at a glance
- SafetyRelease™ function minimises the risk of being deadlocked inside



Vision Plate with Element L3 Lever, Chrome Plate



The Lockwood Keyless Entry Lockset provides outstanding protection for your home and family with the added convenience of remote control locking. This stylish lock is available in a range of designer Lockwood Handle styles, enabling you to achieve a consistent look throughout your home.

## Remote operation convenience

- Three meter range keyless operation with Q-Key remote control
- Use same remote with multiple Nexion Keyless Entry Locksets
- Up to 50 Q-Key remotes can be programmed
- Provides audio and visual indication of lock activation and deactivation

## Security

Conforms to Australian Standard AS4145.2-2008 S<sub>1</sub>7D8C5K6

## Range of styles to suit your home

A matching range of Lockwood Door Handles is also available, allowing you to achieve a consistent style throughout your home.

See **page 17** for available lever styles.

## Safety features

**SafetyRelease™** automatically unlocks the inside handle upon entry to minimise the risk of being locked in.

*Note: Applies to double cylinder locksets.*

**Lockout Release** automatically unlocks the outside handle when the inside handle or snib is operated.

**LockAlert®** indicator shows lock status at a glance.



### Secure Mode

Red: Securely locked from both inside and outside. For when nobody is home.



### Safety Mode

Yellow: Securely locked from outside and free from inside.



### Passage Mode

Green: Free from both inside and outside.

## Quick installation

- Suitable for inward and outward opening doors of a thickness between 35-45mm. Factory set for left hand opening doors, easily changed for right hand opening doors.
- Can be keyed alike with other Lockwood door locks.

## Keyless Entry Lockset

<b>Backset</b>	60mm standard and 70mm backset latch available as an accessory on some models
<b>Latch</b>	13mm projection brass bolt
<b>Door Thickness</b>	35mm to 45mm
<b>Cylinders</b>	Internal and external, 5 pin tumbler mechanism with 6 pin capability, brass cylinders and brass barrels
<b>Finishes</b>	Satin Chrome Satin Pearl Chrome Plate



**Kinetic Defence®**  
Bump and pick resistant.



**2 Keys Included**  
Can be keyed alike to other Lockwood door locks.



**Remote Access**  
Remote Control Locking.



**Quick Installation**  
Suitable for door thicknesses between 35-45mm.



**Safety Release®**  
Minimises the risk of being locked in.  
*Note: Applies to double cylinder locksets.*



**Batteries Included**  
Included.



**Lock Alert®**  
Indicator shows lock status at a glance.

## Vision Plate



# Mechanical Entry Lockset

- Unique LockAlert® indicator shows lock status at a glance
- SafetyRelease™ function minimises the risk of being deadlocked inside



Vision Plate with Element L3 Lever, Satin Chrome



The Lockwood Mechanical Entry Lockset provides outstanding protection for your home and family. This stylish lock is available in a range of designer Lockwood Handle styles, enabling you to achieve a consistent look throughout your home.

## Security

Conforms to Australian Standard AS4145.2-2008 S<sub>1</sub>7D8C5K6

## Quick installation

- Suitable for inward and outward opening doors of a thickness between 35-45mm. Factory set for left hand opening doors, easily changed for right hand opening doors.
- Can be keyed alike with other Lockwood door locks.

## Range of styles to suit your home

The Lockwood Mechanical Entry Lockset is available in two different plate styles. A matching range of Lockwood Door Handles is also available, allowing you to achieve a consistent style throughout your home.

See **page 17** for available lever styles.

## Safety features

**SafetyRelease™** automatically unlocks the inside handle upon entry to minimise the risk of being locked in.

*Note: Applies to double cylinder locksets.*

**Lockout Release** automatically unlocks the outside handle when the inside handle or snib is operated.

**LockAlert®** indicator shows lock status at a glance.



### Secure Mode

Red: Securely locked from both inside and outside. For when nobody is home.



### Safety Mode

Yellow: Securely locked from outside and free from inside.



### Passage Mode

Green: Free from both inside and outside.

## Mechanical Entry Lockset

<b>Backset</b>	60mm standard and 70mm backset latch available as an accessory on some models
<b>Latch</b>	13mm projection brass bolt
<b>Door Thickness</b>	35mm to 45mm
<b>Cylinders</b>	Internal and external, 5 pin tumbler mechanism with 6 pin capability, brass cylinders and brass barrels
<b>Finishes</b>	Satin Chrome (Vision plate only) Satin Pearl Chrome Plate



**Kinetic Defence®**  
Bump and pick resistant.



**2 Keys Included**  
Can be keyed alike to other Lockwood door locks.



**Safety Release®**  
Minimises the risk of being locked in.  
*Note: Applies to double cylinder locksets.*



**Quick Installation**  
Suitable for door thicknesses between 35-45mm.



**Lock Alert®**  
Indicator shows lock status at a glance.

## Vision



Outside



Inside

## Classic



Outside



Inside

# Deadbolts

- Ideal for use with Lockwood Entrance Handles or Door Handles
- Can be keyed alike to other Lockwood door locks



# Symmetry Deadbolts

## Double Cylinder



Inside

Outside

Lockwood's entry-level deadbolt offers standard security for your home.

Available in a single or double cylinder configuration and range of finishes, the Symmetry Deadbolt is ideally suited to compliment Lockwood Key in Knob and Key in Lever locksets.

### Features

- Suits left or right hand opening doors
- Solid brass bolt with 25mm projection
- Hardened insert in locking bolt

## Single Cylinder



Inside

Outside

### Symmetry Deadbolts

<b>Backset</b>	60mm or 70mm adjustable solid brass bolt.
<b>Door Thickness</b>	35mm to 45mm.
<b>Cylinders</b>	5 pin tumbler mechanism. Brass cylinder and brass barrel
<b>Finishes</b>	EverBrass Polished Stainless Steel Satin Stainless Steel

# 005 Double Cylinder Deadbolts

## Round Rose



Inside

Outside

Lockwood's high security deadbolt range offers exceptional safety and security for your home and family.

With Lockwood's unique, patented LockAlert® and SafetyRelease™ functions, this is the pinnacle in deadbolt security products.

Available in either a round or square rose and with 5 different finishes including Stainless Steel, the Lockwood 005 Deadbolt is ideally suited for use with Lockwood's range of Door and Entrance Handles.

### Australian standard

Conforms to Australian Standard AS4145.2-2008 | SL8D8C6K5 for Security and Durability.

### Features

- Innovative multi-mode deadbolt with a slimline design
- Counter balanced stainless steel bolt for added security

**SafetyRelease™** automatically unlocks the internal knob upon entry. This minimises the risk of being locked inside.

**LockAlert®** indicator shows lock status at a glance.

	<b>Secure Mode</b> Locked from inside and outside.
	<b>Safety Mode</b> Locked from outside and free to exit from inside.
	<b>Passage Mode</b> Free to enter from outside and free to exit from inside.

## Square Rose



Inside

Outside

### 005 Double Cylinder Deadbolt

<b>Backset</b>	60mm or 70mm adjustable stainless steel bolt.
<b>Door Thickness</b>	32mm to 48mm. However, 32mm to 36mm doors require spacer ring (included).
<b>Cylinders</b>	5 pin tumbler mechanism Brass cylinder and brass barrel
<b>Finishes</b>	Chrome Plate Satin Chrome Pearl Satin Chrome Brushed Everbrass Satin Stainless Steel (Round version)

	<b>DualSelect®</b> Turn the key for safety mode. Turn the key further to select secure mode.		<b>Kinetic Defence®</b> Bump and pick resistant.
	<b>Safety Release®</b> Minimises the risk of being locked in.		<b>Counterbalance Bolt</b> Proportionally distributes the load between the door and door frame.
	<b>Corrosion Resistant</b> Successfully tested in accordance with AS2332.3.1:2001 neutral salt spray test.		<b>Retrofittable</b> Replace your existing Deadbolt. Fits 54mm hole. 60-70mm adjustable backset. 32-48mm door thickness.
	<b>Lock Alert™</b> Indicator shows lock status at a glance.		<b>2 Keys Included</b> Can be keyed alike to other Lockwood door locks.



# Paradigm® Pull Handle Lockset

- High security deadbolt suitable for external doors
- Contemporary design for modern homes



The Australian designed Paradigm® Pull Handle Lockset expresses superior state-of-the-art design featuring a contemporary style that delivers exceptional safety and security. The Paradigm® Pull Handle lockset is available in three variants including a Deadbolt and Self-Latching Single and Double Cylinders.

The Deadbolt lockset is suitable for residential, new building and renovation market applications whereas, the Self-Latching Single and Double Cylinders are specifically designed for semi-commercial and apartment buildings. Both variants in the Self Latching offering have been successfully tested up to 2 hours (depending on the type of doorset) on fire assemblies in accordance with Australian Standard AS1905.1-2005, part 1: Fire Resistant Doorset for commercial applications.

Incorporating innovative features from the 005 Paradigm® Deadbolt, the Pull Handle is manufactured with a high end security 304 grade Stainless Steel finish, further enhancing the style.

## Key Features

- Conforms to the security and durability requirements of Australian Standard AS4145.2-2008 | S:8D8C6K5
- High security cut resistant Stainless Steel bolt/latch for added security
- Door magnets included to hold the door(s) in position when it is in passage mode
- Concealed screw fixings provide a neat and clean appearance



Exterior Interior Double Cylinder - Deadbolt/Deadlatch Interior Single Cylinder Deadlatch Dummy

## Paradigm® Pull Handle Lockset

<b>Dimensions</b>	External handle length - 600mm Internal handle length - 500mm Handle width - 30mm
<b>Door Thickness</b>	32-46mm
<b>Backset</b>	60-70mm adjustable latch - Deadbolt variant. 60mm, 70mm can be purchased separately (Self-Latching variants)
<b>Cylinder</b>	5 pin tumbler mechanism Brass cylinder and brass barrel
<b>Standard Keying</b>	<ul style="list-style-type: none"> <li>• Supplied individually keyed with two keys per lock</li> <li>• 78,000 key combinations</li> <li>• Key blank KB2015P</li> </ul>
<b>Restricted Special Keying</b>	Lockwood locks can be keyed to a number of controlled and/or specially keyed systems
<b>Finish</b>	Satin Stainless Steel (SSS)



**DualSelect\*\***  
Turn the key for safety mode.  
Turn the key further to select secure mode.



**Counterbalance Bolt\*\***  
Proportionally distributes the load between the door and door frame.



**Safety Release\***  
Minimises the risk of being locked in.



**2 Keys Included**  
Can be keyed alike to other Lockwood door locks.



**Corrosion Resistant**  
Successfully tested in accordance with AS2332.3.1:2001 neutral salt spray test.



**Lock Alert\***  
Indicator shows lock status at a glance.



**Kinetic Defence\***  
Bump and pick resistant.



**Door Thickness**  
32-46mm.

\* Not applicable for Single Cylinder-Deadlatch.

\*\* Not applicable for Single and Double Cylinder-Deadlatch.

# 001® Double Cylinder Deadlatch

- Unique LockAlert® indicator shows lock status at a glance
- SafetyRelease™ function minimises the risk of being deadlocked inside



The iconic Lockwood 001® Deadlatch offers market-leading performance and reliability for your home.

The 001® Deadlatch features a cut-resistant stainless steel bolt, 11 concealed anchorage points and a door frame strengthener that combine to offer high security protection.

As part of the range carrying Lockwood's unique, patented LockAlert® and SafetyRelease™ functions, the 001® Deadlatch offers supreme safety for you and your family.

Additional features include a bolt hold back function that allows you to use your door in passage mode.

## Security

- High security with cut resistant stainless steel bolt, 11 concealed anchorage points and door frame strengthener
- Conforms to Australian Standard AS4145.2-2008 SL7D8C6.

## Safety Features

**SafetyRelease™** automatically unlocks the inside knob upon entry to minimise the risk of being locked in.

**LockAlert®** indicator shows lock status at a glance.



**Secure Mode**  
Locked from inside and outside.



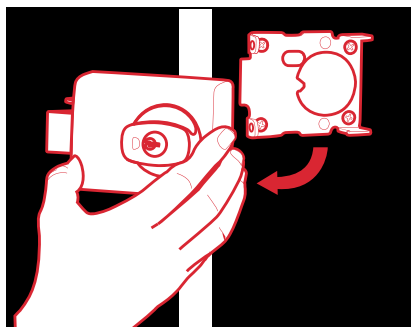
**Safety Mode**  
Locked from outside and free to exit from inside.



**Passage Mode**  
Free to enter from outside and free to exit from inside.

## Retrofittable

Replace your existing rimlock with a 001® Deadlatch.



## 001 Double Cylinder Deadlatch

<b>Backset</b>	60 mm
<b>Latch</b>	Stainless Steel 18mm projection
<b>Door Thickness</b>	30mm to 45mm timber framed doors
<b>Cylinders</b>	5 pin tumbler mechanism Brass cylinder and brass barrel
<b>Finishes</b>	Chrome Plate Satin Chrome Pearl Brown Gold



Inside



Outside



Inside, with Lever



**Lock Alert®**  
Indicator shows lock status at a glance.



**Kinetic Defence®**  
Bump and pick resistant.



**Safety Release®**  
Minimises the risk of being locked in.



**2 Keys Included**  
Can be keyed alike to other Lockwood door locks.

# Deadlocks

- Concealed fixings for superior anchorage
- Suits hinged and sliding doors



The 303 Single Cylinder Deadlock and 355 Double Cylinder Deadlock suits inward opening, outward opening and sliding doors of 30-45mm thickness.

Both the 303 Single Cylinder Deadlock and 355 Double Cylinder Deadlock can be opened by key from outside and by turn knob from inside. Each feature concealed fixings for superior anchorage and security.

Suitable door types include: single hinged door, single sliding door, pair timber hinged doors and pair timber sliding doors. Glazed doors require minimum side rail.

## Security

Conforms to Australian Standard AS4145.2-2008 S<sub>1</sub>7D8C6.

## Deadlock Specifications

<b>Backset</b>	60mm
<b>Door Thickness</b>	30mm to 45mm.
<b>Cylinders</b>	5 pin tumbler mechanism Brass cylinder and barrel
<b>Bolt</b>	Stainless Steel
<b>303 Finishes</b>	Satin Chrome Pearl
<b>355 Finishes</b>	Everbrass Satin Chrome Pearl Chrome Plate Brown

### 303 Single Cylinder Deadlock



Outside



Inside

### 355 Double Cylinder Deadlock



Outside



Inside

The inside knob can be locked on the 355 Double Cylinder Deadlock for additional security.



**Kinetic Defence®**  
Bump and pick resistant.



**2 Keys Included**  
Can be keyed alike to other Lockwood door locks.



# Entrance Handles

- 304 grade Stainless Steel
- Suitable for glass, timber or aluminium doors



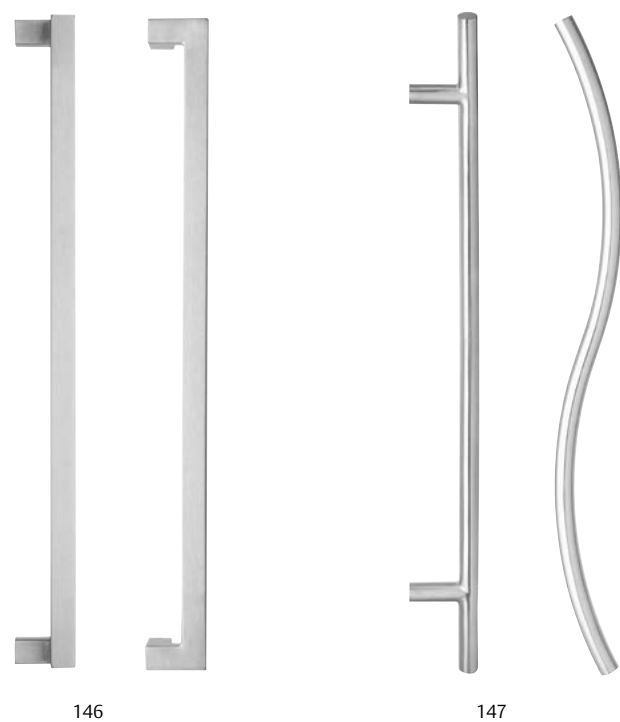
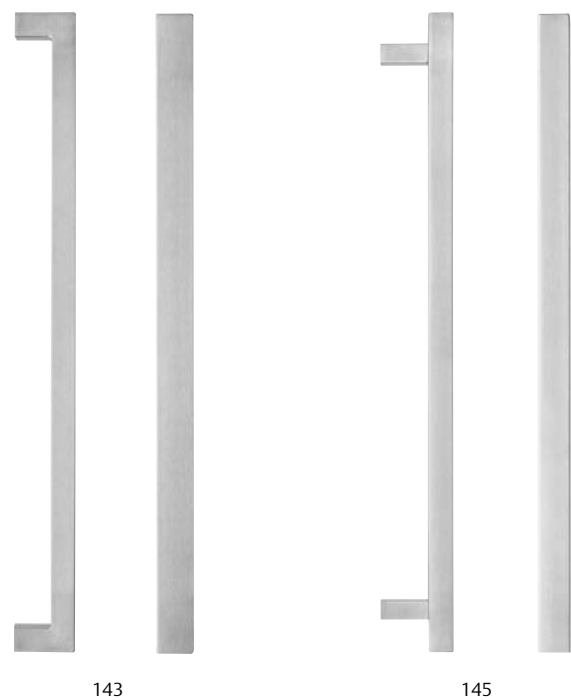
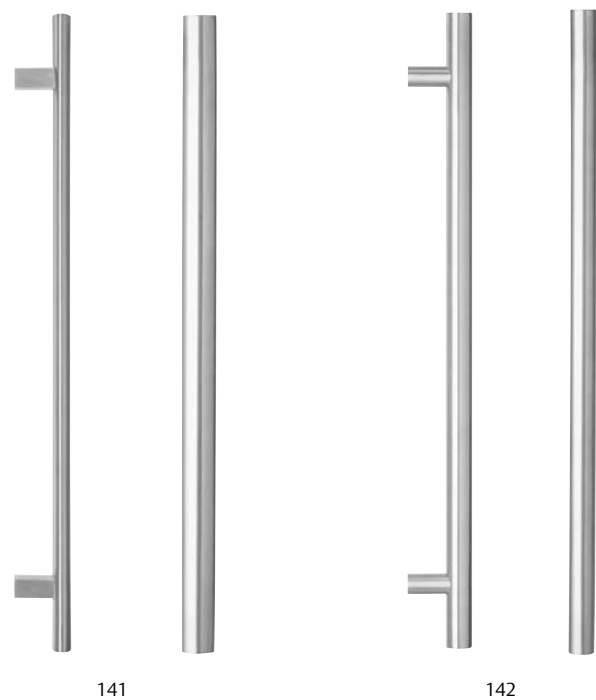
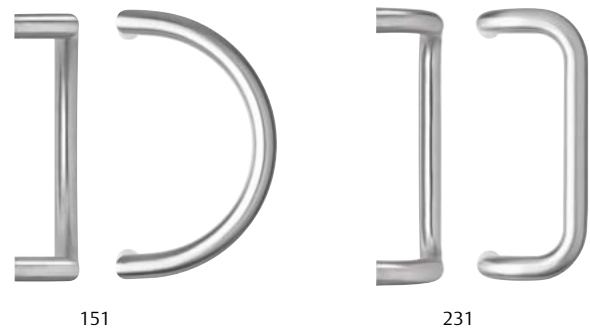


Lockwood Entrance Handles are constructed using 304 grade stainless steel to incorporate the maximum standards in style, durability, finish and design.

### Features

- Nine designs, ranging from the classic to the contemporary
- Constructed of 304 grade stainless steel, Lockwood Entrance Handles are suitable for use in external environments
- Each Lockwood Entrance handle comes supplied with spigots to suit 10 to 12mm thick glass doors as well as spigots to suit aluminium and timber doors up to 50mm thick.

Entrance Handles	
Construction	304 grade stainless steel
Door Thickness	10mm to 12mm (glass doors) Up to 50mm (aluminium and timber doors)
Finishes	Satin Stainless Steel



# 63mm & 55mm Velocity Series Door Lever Handles

- Quick installation
- Available in a range of styles and finishes



63mm Rose, Glide™ L4 Lever in Chrome Plate

Lockwood's Velocity Series Door Handles offer an exceptional level of quality that is synonymous with the Lockwood brand.

Available in two different rose sizes with a range of finishes and a selection of stylish lever options.

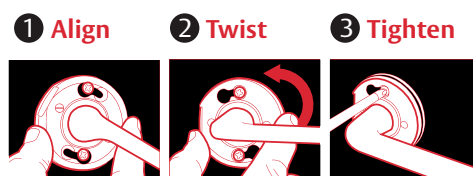
All fixings are concealed beneath the removable rose trim providing a crisp and clean presentation.

Achieve consistent styling throughout your home by matching your internal door handles with your selected Lockwood external lock.

## Quick Installation

The frustration of fiddling with small parts or misplacing them during installation is a thing of the past. The Velocity range of lever sets are supplied pre-assembled so there are no loose screws or spindles.

Screws align through the rose removing the need to locate them blind through the door. A twist and a quick tighten of screws and the levers are installed.



**\* Note:** Display pack range only. Additional functions and alternative lever range available in trade pack range, see website for details.

## 63mm Rose Leverset

Backset	60mm
Rose Type	Round
Door Thickness	32mm to 45mm
Rose Dimensions	63mm by 12.5mm
Finishes	Satin Chrome Brushed Satin Chrome Pearl Chrome Plate
Functions	Passage Privacy

## 55mm Rose Leverset

Backset	60mm
Rose Type	Round or Square
Door Thickness	32mm to 45mm
Rose Dimensions	55mm by 12.5mm
Finishes	Satin Chrome Brushed Satin Chrome Pearl Chrome Plate
Functions*	Passage Privacy

## 63mm Round Rose Leversets

The 63mm Rose size is ideal for replacing existing handles, covering paint lines on doors.

Passage

Privacy



Summit® - L1



Spire® - L2



Element™ - L3



Glide™ - L4



Hakea® - 28



Saltbush® - 34

## 55mm Round and Square Rose Leversets

The 55mm Rose size is designed primarily for new installations and is available in a round or Square Rose.

Passage

Privacy



Summit® - L1 | Round



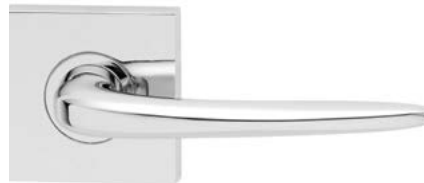
Spire® - L2 | Round



Element™ - L3 | Round



Glide™ - L4 | Round



Summit® - L1 | Square



Spire® - L2 | Square



Element™ - L3 | Square



Glide™ - L4 | Square

# Symmetry Door Handle Range

- Suits left or right handed doors
- Available in Entrance, Privacy, Passage and Dummy models



Vicinity Entrance Leverset, Chrome Plate

Symmetry Series Key in Knob and Key in Lever Locksets are suitable for left or right handed doors and can be keyed alike to other Lockwood door locks.

Symmetry Entrance sets are ideally suited for use with Lockwood Symmetry Deadbolts and are also available in Passage, Privacy and Dummy versions to create a consistent style throughout your home.

## Symmetry Door Furniture

<b>Construction</b>	Zinc Alloy with Steel Chassis
<b>Door Thickness (Timber doors)</b>	Manor Knobset: 35mm to 45mm Imperial Knobset: 32mm to 46mm District Leverset: 35mm to 51mm Vicinity Leverset: 35mm to 51mm
<b>Backset</b>	Manor Knobset: 60mm cylindrical latch Imperial Knobset: 60 or 70mm adjustable latch District Leverset: 60 or 70mm adjustable latch Vicinity Leverset: 60 or 70mm adjustable latch
<b>Finishes</b>	Everbrass Chrome Plate Satin Chrome Brushed
<b>Handing</b>	Suits left or right handed doors



# Symmetry Knobsets

Entrance

Passage

Privacy

Dummy



Manor Entrance Knobset



Manor Privacy Knobset



Manor Passage Knobset



Imperial Entrance Knobset



Imperial Privacy Knobset



Imperial Passage Knobset

# Symmetry Leversets

Entrance

Passage

Privacy

Dummy



District Entrance Leverset



District Privacy Leverset



District Passage Leverset



Vicinity Entrance Leverset



Vicinity Privacy Leverset



Vicinity Passage Leverset

# Patio and Mortice Sliding Door Locks

- Unique LockAlert® indicator
- Non-handed lock suits left and right handed doors



The Lockwood Onyx range incorporates advanced security and safety features making this product the ideal choice for sliding patio door applications.

Onyx is further enhanced by the intuitive operation of the unique sliding snib and the innovative LockAlert® feature that indicates the lock status at a glance.

## Features

- **LockAlert®** indicator shows lock status at a glance
- **Dual Select®** enables two stage key locking
- **Door Close Detect (DCD)** anti slam feature protects locking beaks from accidental damage
- Snib action always moves upwards, regardless of door handing
- The C4 cylinder can be easily rekeyed to existing C4 profile door and window locks
- Easy to operate with key or snib
- Non-handed; suitable for most new and retrofit applications
- Available in a range of finishes

## Patio Sliding Door Lock

<b>Fixing</b>	Surface mounted, concealed fixing with 82mm pitching centres
<b>Door Thickness</b>	Aluminium and Timber doors from 19mm to 50mm.
<b>Handing</b>	Field selectable
<b>Finishes</b>	Satin Chrome Pearl Black Powdercoat Silver Powdercoat White Powdercoat <i>Other Plated and Powdercoat finishes are available as a special order</i>



D Inner Handle



Slim Inner Pull



Slim Outer Pull



Universal Strike



**DualSelect®**  
Turn the key for safety mode. Turn the key further to select secure mode.



**DCD** **Door Close Detect (DCD)**  
Anti slam feature protects from accidental damage and ensures door is closed before being latched or locked.



**Lock Alert®**  
Indicator shows lock status at a glance.



**Twin Locking Beaks**  
For added security.



**Kinetic Defence®**  
Bump and Pick Resistant.



**2 Keys Included**  
Can be keyed alike to other Lockwood door locks.

## Mortice Sliding Door Lock

<b>Fixing</b>	Mortice mounted, concealed fixings.
<b>Door Thickness</b>	Aluminium and Timber doors up to 45mm thick.
<b>Handing</b>	Field selectable
<b>Finishes</b>	Satin Chrome Pearl <i>Other Polyester Powdercoat finishes are available as a special order</i>



Internal D Handle with Cylinder



Dummy D Handle



Internal Slim Dummy



Adjustable Strike



**DualSelect®**  
Turn the key for safety mode. Turn the key further to select secure mode.



**DCD** **Door Close Detect (DCD)**  
Anti slam feature protects from accidental damage and ensures door is closed before being latched or locked.



**Lock Alert®**  
Indicator shows lock status at a glance.



**Twin Locking Beaks**  
For added security.



**Kinetic Defence®**  
Bump and Pick Resistant.



**2 Keys Included**  
Can be keyed alike to other Lockwood door locks.

# Cavity Sliding Door Locks

- Retractable Door Pull
- Available in Entrance, Privacy, Passage and Latching Passage models



The Cavity Sliding Door Lock range features an innovative retractable door pull that is ideal for fully recessed cavity sliding doors.

This creates a completely flush finish with no protruding parts, combining elegance with ease of use.

Available in entrance, passage, passage latch and privacy functions.

## Key features

- Easily fitted into a standard 54mm door preparation with a 60mm backset.
- Fitted flush against the panel of the sliding door for full recess into the door cavity.
- Key lockable version meets Australian standard AS4145.2-2008: Tested to exceed 30,000 turn cycles withstanding 3 kN of pull force.

### Entrance Set

<b>Outside</b>	Locked or unlocked by key
<b>Inside</b>	Locked or unlocked by turn-plate
<b>Backset</b>	60mm
<b>Door Thickness</b>	32mm* to 40mm for timber doors * Requires spacer ring (included)
<b>Finishes</b>	Satin Chrome Pearl Chrome Plate



### Passage Latch Set

<b>Outside</b>	Locked or unlocked by turn-plate
<b>Inside</b>	Locked or unlocked by turn-plate
<b>Backset</b>	60mm
<b>Door Thickness</b>	32mm* to 40mm for timber doors * Requires spacer ring (included)
<b>Finishes</b>	Satin Chrome Pearl Chrome Plate



### Privacy Set

<b>Outside</b>	Emergency release button opened by coin or screwdriver
<b>Inside</b>	Locked or unlocked by turn-plate
<b>Backset</b>	60mm
<b>Door Thickness</b>	32mm* to 40mm for timber doors * Requires spacer ring (included)
<b>Finishes</b>	Satin Chrome Pearl Chrome Plate



### Passage Set

<b>Outside</b>	Free to slide door at all times
<b>Inside</b>	Free to slide door at all times
<b>Backset</b>	60mm
<b>Door Thickness</b>	32mm* to 40mm for timber doors * Requires spacer ring (included)
<b>Finishes</b>	Satin Chrome Pearl Chrome Plate



# 680 Lockable Patio Bolt

- Suitable for hinged or sliding doors
- Can be locked in open or closed position



The Lockwood 680 Patio Bolt is a strong, heavy duty, surface mounted product designed to improve security in a range of residential sliding and hinge door applications.

It is easy to install and has been designed to suit a wide range of aluminium and timber sliding patio and hinge door applications.

## Features

- Suits sliding and hinged doors
- Strong steel locking bolt that is easy to install
- Suits right and left handed, timber or aluminium doors
- Standard and flat strikes included to suit a large range of doors
- Secure concealed fixing

## 680 Patio Bolt

<b>Application</b>	Timber or Aluminium doors
<b>Bolt</b>	Steel, Zinc Plated
<b>Cylinders</b>	Solid Brass 5 pin cylinder
<b>Finishes</b>	Gold Chrome Plate Satin Chrome Pearl Black Brown Primrose White
<b>Security</b>	Conforms to Australian Standard 4145.2 Level SL7



**2 Keys Included**  
Can be keyed alike to other Lockwood door locks.



**Kinetic Defence®**  
Bump and pick resistant.



# Hinged and Sliding Security Screen Door Locks

- Stainless steel hook bolt for increased security
- DualSelect® function



## Hinged and Sliding Security Screen Door Locks

Lockwood's range of Security Door Locks are designed to suit the standard 20mm hinged or sliding security door.

Both versions feature Lockwood's unique DualSelect® functionality and are self-latching for improved home security. Can also be locked from the inside using a snib.

Available in a range of finishes, comes with two keys and can be keyed alike to other Lockwood door locks. Suits left and right handed doors.

Confirms to Australian Standard AS4145.2 2008, offering exceptional performance and reliability.

### Optional Accessories

- 3 point locking kit available for premium security
- When 3 point locking kit is fitted, snib operates all 3 locking points

### 8654 Hinged Security Door Lock

**Door Thickness** Standard 20mm

**Cylinders** 2 x 5 pin cylinder

**Polyester Powdercoat Finishes**  
Black  
Brown  
Gold Spangle  
Magnolia  
Primrose  
White  
White Birch

**Plated Finishes**  
Chrome Plate  
Satin Chrome Pearl  
Everbrass



Inside

### 8653 Sliding Security Door Lock

**Door Thickness** Standard 20mm

**Cylinders** 2 x 5 pin cylinder

**Polyester Powdercoat Finishes**  
Black  
Primrose  
White



Inside

The 8653 Sliding Security Door Lock includes a **LockAlert®** indicator which shows the lock's status at a glance.



**DualSelect®**  
Turn the key for safety mode. Turn the key further to select secure mode.



**2 Keys Included**  
Can be keyed alike to other Lockwood door locks.



**DualSelect®**  
Turn the key for safety mode. Turn the key further to select secure mode.



**2 Keys Included**  
Can be keyed alike to other Lockwood door locks.



**Kinetic Defence®**  
Bump and pick resistant.



**Kinetic Defence®**  
Bump and pick resistant.



**Lock Alert®**  
Indicator shows lock status at a glance.

# 120N Series Padlocks

- Double Locking
- Protective Silicone Jackets



The 120N Series Display Padlock range includes 14 different models, with single, twin and quad packs (keyed alike), as well as extended shackle lengths for selected models.

All padlocks in this range come complete with jackets made from a tough silicone material which is weather resistant and UV stable to resist the impact of harsh environments.

The jacket also provides protection for both the padlock and the object to which it is attached.

The 120N padlocks are suitable for a broad range of general purpose applications including garden sheds, garages, letterboxes or locking up your bicycle.

All products are designed and tested to the Australian Padlock Standard AS4145.4 2002 and are rated for both security and corrosion resistance.

## Product Features

- Protective silicone jackets
- Individual jacket colours for each model
- Double locking shackle mechanism
- Self-latching shackle function
- Pin tumbler locking
- Extended shackles on some 30mm and 40mm models

## Product Details

<b>Body</b>	Heavy duty solid brass Models ranging from 30mm to 60mm
<b>Shackle</b>	Heavy duty chrome plated hardened steel Self Latching and Double Locking Models ranging from 18mm to 80mm
<b>Jacket</b>	Weather resistant Silicone
<b>Multipacks (keyed alike)</b>	Available on some 30mm and 40mm variants

When it comes to safety it's primal, it's our survival, a basic human need. We want freedom to live, explore and rest without fear. To leave behind in safety our precious, cherished and most valuable things. And to come back to them exactly as we left them.

For as long as we have valuables, we will always need protection. Though the need for our products is driven by concerns, the Belief in our Brand is propelled by confidence. An unquestioned confidence in our ability to protect what is most important to you.

Our products provide peace of mind through strength, substance and style. Our reputation is forged in traditions, supreme workmanship, uncompromised values and above all our people. We are a trusted, tireless and vigilant guardian that protects families, households, trades and businesses.

Because if feeling safe is a basic human need, knowing you're safe is why Lockwood exists. For over 75 years, our guiding principle is and will always be: To take the worry out of protecting what is valuable to you.

**Lockwood:** *no worries*<sup>®</sup>



Lockwood is the leading brand in the Australian locking industry. With an established reputation for high quality products, this iconic brand provides a wide range of locking solutions to residential housing, commercial building and industrial application markets. Lockwood is supported by an extensive distribution and after-sales support network. Our customers include retailers, architects, trade and industrial personnel, locksmiths and security dealers.



ASSA ABLOY is the global leader in door opening solutions, dedicated to satisfying end-user needs for security, safety and convenience.

ASSA ABLOY is represented in all major regions, in both mature and emerging markets, with leading positions in Australia, Europe and North America.



#### The Lockwood 25 Year Mechanical Warranty

Our belief that we manufacture the finest premium products available in today's market place is backed by the Lockwood 25 Year Mechanical Warranty, ensuring that Lockwood continues to keep Australians safe by delivering security and peace of mind.

For warranty terms and conditions, please visit [www.lockweb.com.au](http://www.lockweb.com.au) or call 1300WARRANTY

**ASSA ABLOY Australia Pty Ltd**  
235 Huntingdale Road  
Oakleigh, Victoria, 3166  
Australia

1300 LOCK UP (1300 562 587)  
[lockweb.com.au](http://lockweb.com.au)

**ASSA ABLOY New Zealand Ltd**  
6 Armstrong Road  
Albany, Auckland, 0632  
New Zealand

[info.nz@assaabloy.com](mailto:info.nz@assaabloy.com)  
Telephone +64 9415 7111  
[assaabloy.co.nz](http://assaabloy.co.nz)

#### Disclaimer

Whilst every effort has been made to ensure that the information (including product images and drawings) contained in this brochure is accurate at the time of publication, ASSA ABLOY Australia Pty Limited ("ASSA ABLOY") recommends that you consult ASSA ABLOY or its agents prior to placing an order to ascertain current information on specific products, as ASSA ABLOY reserves the right to make changes without notice. ASSA ABLOY will not be liable for any injury, loss or damage whatsoever, arising from any errors or omissions in the information contained in the brochure or arising from the use or application of the information contained herein. © 2016 copyright by ASSA ABLOY All rights reserved

